

BitDefender Client Security

The security solutions integrator



BitDefender Client Security integrates BitDefender Enterprise Manager and BitDefender Professional Plus Client into one seamless security solution. BitDefender Enterprise Manager enables the full automation of routine tasks (including upgrades and updates), while allowing the administrator to install clients and execute tasks from anywhere in the network, in a safe and secure manner. BitDefender Professional Plus Client integrates antivirus, firewall, antispam and antispymware modules into one comprehensive workstation security package, tailored to meet the needs of corporate computer users worldwide.

Key Benefits:

- Low administrator workload and administration costs due to easy deployment, installation and management from one central location;
- Easy, real-time management of BitDefender security products from one management console;
- Integrated security for corporate computer users;
- Increased security based on completely automated response to new virus outbreaks.

Key Features:

- Antivirus, firewall, antispam and antispymware protection for corporate computer users;
- Support for WMI administration tasks;
- Support for most BitDefender security products;
- Support for Windows update management;
- Intelligent fail-safe options to prevent any application interruption.

BitDefender advanced technologies:



At the core of all BitDefender products is B-HAVE (Behavioral Heuristic Analyzer in Virtual Environments). In addition to traditional signature detection and content-based heuristic methods, B-HAVE implements behavior-based heuristics. By emulating a virtual computer-inside-a-computer where pieces of software are run and checked for potential malicious behavior, B-HAVE virtually eliminates false positives and significantly increases detection rates for new and unknown malware. This proprietary BitDefender technology represents a new security layer that keeps the operating system safe from unknown viruses by detecting malicious pieces of code for which signatures have not yet been released.

Certified Antivirus Engines

BitDefender's award winning scan engines featuring the B-HAVE technology have been recognized by leading certification bodies to provide the most proactive antivirus protection available. The BitDefender Antivirus scan engines are certified by ICSA Labs, Virus Bulletin and Checkmark.

BitDefender Enterprise Manager

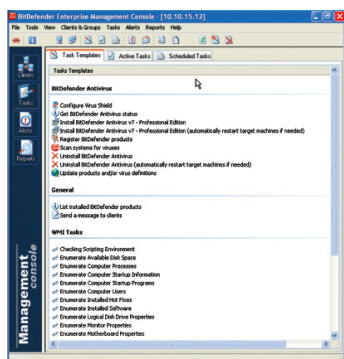
Core Functionalities

Product Integration

BitDefender Enterprise Manager integrates with and manages the following products:

- BitDefender Professional Plus Client;
- BitDefender Security for Mail Servers (Windows);
- BitDefender Security for Exchange;
- BitDefender Security for File Servers;
- BitDefender Security for ISA Servers;
- BitDefender Security for SharePoint;

BitDefender Enterprise Manager is bundled in the Enterprise Product Suites listed above and it is designed to get your network's security up and running in one go, without the need to worry about integrating heterogeneous products.



Completely Automated Response to New Virus Outbreaks

The hourly updated virus definitions available on the BitDefender servers are automatically retrieved and deployed throughout the network. The BitDefender scanning engines can be set to automatically delete or repair suspicious or infected files. Bandwidth usage is also minimized due to a centralized update location in the network.

WMI Administrative Tasks

This feature allows running over 20 script tasks across the BitDefender Enterprise Manager network. WMI tasks can be used primarily to get hardware and system information about the workstations within the network (hardware properties, startup programs, installed software, hot fixes, service packs, and much more) or to stop potentially harmful tasks running on workstations and to remove software.

MS Windows Update Management

This feature allows BitDefender Enterprise Manager administrators to manage the update process of Windows 2000/XP/2003. Using two dedicated tasks you can configure the Windows Update settings and get info about installed updates on the managed workstations.

Security

Communication between the various product modules, clients and server add-ons is achieved through secure channels. For improved safety, the console can be password protected to make sure that only the administrator can access it.

Fail-Safe Options

BitDefender Enterprise Manager can save its settings into a file. If the settings become unusable, corrupted or if they are accidentally deleted, the administrator can recover them very easily by importing them from the saved file. If some modules become damaged, the product is capable of repairing itself by downloading the corrupted or missing files from BitDefender Update Servers. This process does not require any user intervention as it is performed automatically.

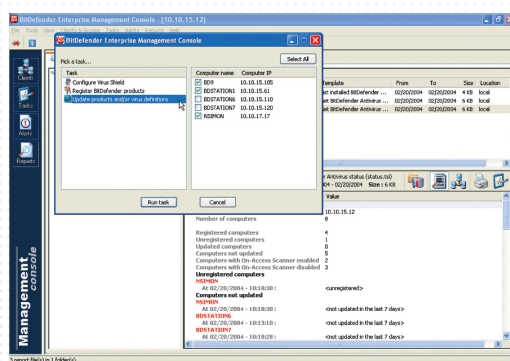
Increased Usability

Server Administration

BitDefender Enterprise Manager can be managed from a remote console. The administration server can be installed on one computer, while the console can be installed on multiple computers, from which the administrator can centrally manage the antivirus programs installed throughout the network.

Client Administration

For enhanced administration, groups can be formed so that the administrator can perform the same action on multiple clients, simultaneously. Moreover, BitDefender Enterprise Manager can automatically create client groups of PCs sorted by Windows Domain or Workgroup membership.





BitDefender Professional Plus Client

Antivirus

■ Permanent Antivirus Protection

The BitDefender scanning engines will scan and clean infected files on access, minimizing data loss. The product is designed to place as little burden as possible on its users and on the host system, while providing state-of-the-art defense against current threats.

■ Peer-2-Peer Applications Protection

The product filters against viruses that spread via instant messaging and file sharing software applications.

■ Full E-mail Protection

The application runs on the POP3 protocol level, blocking any infected e-mail message, regardless of the e-mail client used, without any additional configuration.

Firewall

■ Permanent Firewall Protection

The firewall module protects your data and your privacy by filtering incoming and outgoing traffic, controlling cookies, blocking malicious scripts and "XXX-dialer" type programs.

■ Internet Traffic Control

The user can define exactly which incoming or outgoing connections to permit/deny as well as rules regarding specific protocols, ports, applications and/or remote address.

■ Enhanced Internet Application Control

Users can make informed decisions because they are alerted about any application trying to access the Internet and they are notified whether the applications demanding network access are trustworthy.

Antispam

■ Smart Antispam Filtering

Users will only be notified of the arrival of legitimate messages, while spam will collect silently in the "Spam" folder, to be examined or discarded at will.

Self-learning Bayesian Filter

By simply classifying messages as "Spam" or "Legitimate" the user can train the advanced, self-learning Bayesian filter which will gradually relieve him of this kind of decisions. Each tag the user assigns improves



the filter's accuracy. The user can set the filter's sensitivity as high or as low as necessary.

■ Heuristic, URL, WhiteList/Blacklist, Charset and Image Filters

Five types of filters further refine your control over e-mail. The heuristic filter checks mail for the characteristics of spam. The Whitelist/Blacklist filter rejects mail from known spammer addresses and lets friends' mail through. The URL filter blocks mail containing malicious links while the charset filter blocks mail written in "strange" characters. The image filter decides whether images embedded in e-mails are specific to spam.

Antispyware

■ Permanent Antispyware Protection

BitDefender Professional Plus Client monitors dozens of potential "hotspots" in the system where spyware might act. It also checks any changes brought to the user's system and software. Known spyware threats are also blocked in real-time, based on a comprehensive database of spyware signatures.

■ Spyware Scanning and Cleaning

BitDefender Professional Plus Client can scan the entire system, or just part of it, for known spyware threats. The scan uses a constantly updated spyware signature database.



Services

Hourly Updates

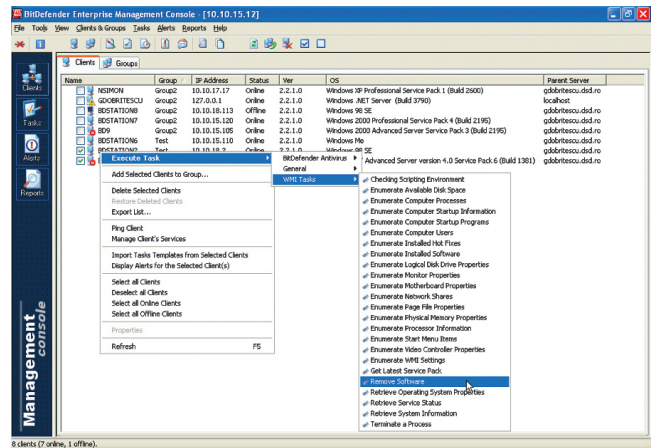
BitDefender is updated 24 times a day over the Internet, directly or through a Proxy Server. The product is able to repair itself, if necessary, by downloading the damaged or missing files from the BitDefender servers.

Upgrades

Registered users benefit from free upgrades to any new version of the product during the license period. Special price offers are also available to returning customers.

Free 24/7 Professional Technical Support

Certified representatives provide BitDefender business customers with free permanent support online, by telephone or e-mail. This is supplemented by an online database with answers to Frequently Asked Questions and fixes for common issues.



Download the evaluation version from www.bitdefender.com.

System requirements:

BitDefender Professional Plus Client

- Pentium MMX 200 MHz or higher processor
- HD space - 40MB
- Minimum 64MB of RAM Memory (128MB recommended)
- Operating system: Windows 98/NT-SP6/Me/2000/XP 32-bit, IE 5.5(+)

System requirements:

General Requirements – Enterprise Manager

- Microsoft Windows Network (TCP/IP)
- Internet Explorer 5.0+

For BitDefender Server:

- Intel Pentium compatible processor – min. 200 MHz
- HD space - 100MB
- RAM - 128MB (256MB recommended)
- Operating system - Windows NT 4.0 SP6/2000/ XP/2003

For BitDefender Deployment Tool:

- Operating system - Windows NT 4.0 SP6/ 2000/ XP

For BitDefender Management Console/Local Manager

- Processor - Intel Pentium compatible processor
- HD space - 10MB
- RAM - 64MB
- Operating system – Windows 98SE/NT4.0 SP6/Me/2000/ XP/2003
- Minimum resolution - 800x600 / 16 bit

