

bitdefender

Mobile Antivirus



User's guide



Antivirus

BitDefender Mobile Antivirus Symbian Series 60 Edition

User's guide

BitDefender

Published 2006.08.25
Version Beta 2.0

Copyright© 2006 SOFTWIN

Legal Notice

All rights reserved. No part of this book may be reproduced or transmitted in any form or by any means, electronic or mechanical, including photocopying, recording, or by any information storage and retrieval system, without written permission from an authorized representative of SOFTWIN. The inclusion of brief quotations in reviews may be possible only with the mention of the quoted source. The content can not be modified in any way.

Warning and Disclaimer. This product and its documentation are protected by copyright. The information in this document is provided on an "as is" basis, without warranty. Although every precaution has been taken in the preparation of this document, the authors will not have any liability to any person or entity with respect to any loss or damage caused or alleged to be caused directly or indirectly by the information contained in this work.

This book contains links to third-party Websites that are not under the control of SOFTWIN, therefore SOFTWIN is not responsible for the content of any linked site. If you access a third-party website listed in this document, you will do so at your own risk. SOFTWIN provides these links only as a convenience, and the inclusion of the link does not imply that SOFTWIN endorses or accepts any responsibility for the content of the third-party site.

Trademarks. Trademark names may appear in this book. All registered and unregistered trademarks in this document are the sole property of their respective owners, and are respectfully acknowledged.





Table of Contents

License and Warranty	vii
Preface	xi
1. Conventions Used in This Book	xi
1.1. Typographical Conventions	xi
1.2. Admonitions	xii
2. The Book Structure	xii
3. Request for Comments	xiii
About BitDefender	15
1. Overview	17
1.1. Why BitDefender?	17
1.2. About SOFTWIN	18
Product Installation	21
2. BitDefender Mobile Antivirus - Update Module Installation	23
2.1. System Requirements	23
2.2. Installation Steps	23
2.3. Repair or Uninstall BitDefender Mobile Antivirus - Update Module	25
3. BitDefender Mobile Antivirus Installation	27
3.1. Device Requirements	27
3.2. Installing BitDefender Mobile Antivirus	27
3.3. Uninstalling BitDefender Mobile Antivirus	28
Description and Features	29
4. BitDefender Mobile Antivirus	31
Configuration and Use	33
5. BitDefender Mobile Antivirus	35
5.1. Overview	35
5.2. Scan	37
5.2.1. Settings List	38
5.2.2. Options menu	41
5.3. Report	45
5.4. Shield	46
5.4.1. Settings List	47
5.5. Device Update	48
5.5.1. Settings List	49
5.5.2. Options Menu	49

6. BitDefender Mobile Antivirus - Update Module	53
6.1. Overview	53
6.2. Update	54
6.3. Settings	56
6.3.1. General Settings	56
6.3.2. Update Settings	56
6.3.3. Update Location Settings	56
6.4. Help	58
6.4.1. Help Information	58
6.4.2. Contact Information	59
Getting Help	61
7. Support	63
7.1. Support Department	63
7.2. On-line Help	63
7.2.1. BitDefender Knowledge Base	63
7.3. Contact information	64
7.3.1. Web addresses	64
7.3.2. Address	64
Glossary	67



License and Warranty

IF YOU DO NOT AGREE TO THESE TERMS AND CONDITIONS DO NOT INSTALL THE SOFTWARE. BY SELECTING "I ACCEPT", "OK", "CONTINUE", "YES" OR BY INSTALLING OR USING THE SOFTWARE IN ANY WAY, YOU ARE INDICATING YOUR COMPLETE UNDERSTANDING AND ACCEPTANCE OF THE TERMS OF THIS AGREEMENT.

These Terms cover BitDefender Solutions and Services for home-users licensed to you, including related documentation and any update and upgrade of the applications delivered to you under the purchased license or any related service agreement as defined in the documentation and any copy of these items.

This License Agreement is a legal agreement between you (either an individual or a legal person) and SOFTWIN for use of SOFTWIN's software product identified above, which includes computer software and services, and may include associated media, printed materials, and "online" or electronic documentation (hereafter designated as "BitDefender"), all of which are protected by international copyright laws and international treaties. By installing, copying or using BitDefender, you agree to be bound by the terms of this agreement.

If you do not agree to the terms of this agreement, do not install or use BitDefender.

BitDefender License. BitDefender is protected by copyright laws and international copyright treaties, as well as other intellectual property laws and treaties. BitDefender is licensed, not sold.

GRANT OF LICENSE. SOFTWIN hereby grants you and only you the following non-exclusive, limited, non-transferable and royalty-bearing license to use BitDefender.

APPLICATION SOFTWARE. You may install and use BitDefender, on as many computers as necessary with the limitation imposed by the total number of licensed users. You may make one additional copy for back-up purpose.

DESKTOP USER LICENSE. This license applies to BitDefender software that can be installed on a single computer and which does not provide network services. Each primary user may install this software on a single computer and may make one additional copy for backup on a different device. The number of primary users allowed is the number of the users of the license.

TERM OF LICENSE. The license granted hereunder shall commence on the purchasing date of BitDefender and shall expire at the end of the period for which the license is purchased.

UPGRADES. If BitDefender is labeled as an upgrade, you must be properly licensed to use a product identified by SOFTWIN as being eligible for the upgrade in order to use BitDefender. A BitDefender labeled as an upgrade replaces and/or supplements the product that formed the basis for your eligibility for the upgrade. You may use the resulting upgraded product only in accordance with the terms of this License Agreement. If BitDefender is an upgrade of a component of a package of software programs that you licensed as a single product, BitDefender may be used and transferred only as part of that single product package and may not be separated for use by more than the total number of licensed users. The terms and conditions of this license replace and supersede any previous agreements that may have existed between you and SOFTWIN regarding the original product or the resulting upgraded product.

COPYRIGHT. All rights, titles and interest in and to BitDefender and all copyright rights in and to BitDefender (including but not limited to any images, photographs, logos, animations, video, audio, music, text, and "applets" incorporated into BitDefender), the accompanying printed materials, and any copies of BitDefender are owned by SOFTWIN. BitDefender is protected by copyright laws and international treaty provisions. Therefore, you must treat BitDefender like any other copyrighted material. You may not copy the printed materials accompanying BitDefender. You must produce and include all copyright notices in their original form for all copies created irrespective of the media or form in which BitDefender exists. You may not sub-license, rent, sell, lease or share the BitDefender license. You may not reverse engineer, recompile, disassemble, create derivative works, modify, translate, or make any attempt to discover the source code for BitDefender.

LIMITED WARRANTY. SOFTWIN warrants that the media on which BitDefender is distributed is free from defects for a period of thirty days from the date of delivery of BitDefender to you. Your sole remedy for a breach of this warranty will be that SOFTWIN, at its option, may replace the defective media upon receipt of the damaged media, or refund the money you paid for BitDefender. SOFTWIN does not warrant that BitDefender will be uninterrupted or error free or that the errors will be corrected. SOFTWIN does not warrant that BitDefender will meet your requirements.

EXCEPT AS EXPRESSLY SET FORTH IN THIS AGREEMENT, SOFTWIN DISCLAIMS ALL OTHER WARRANTIES, EXPRESS OR IMPLIED, WITH RESPECT TO THE PRODUCTS, ENHANCEMENTS, MAINTENANCE OR SUPPORT RELATED THERETO, OR ANY OTHER MATERIALS (TANGIBLE OR INTANGIBLE) OR SERVICES SUPPLIED BY HIM. SOFTWIN HEREBY EXPRESSLY DISCLAIMS ANY IMPLIED WARRANTIES AND CONDITIONS, INCLUDING, WITHOUT LIMITATION, THE IMPLIED WARRANTIES OF MERCHANTABILITY, FITNESS FOR A PARTICULAR PURPOSE, TITLE, NON INTERFERENCE, ACCURACY OF DATA, ACCURACY OF INFORMATIONAL CONTENT, SYSTEM INTEGRATION, AND NON INFRINGEMENT



OF THIRD PARTY RIGHTS BY FILTERING, DISABLING, OR REMOVING SUCH THIRD PARTY'S SOFTWARE, SPYWARE, ADWARE, COOKIES, EMAILS, DOCUMENTS, ADVERTISEMENTS OR THE LIKE, WHETHER ARISING BY STATUTE, LAW, COURSE OF DEALING, CUSTOM AND PRACTICE, OR TRADE USAGE.

DISCLAIMER OF DAMAGES. Anyone using, testing, or evaluating BitDefender bears all risk to the quality and performance of BitDefender. In no event shall SOFTWIN be liable for any damages of any kind, including, without limitation, direct or indirect damages arising out of the use, performance, or delivery of BitDefender, even if SOFTWIN has been advised of the existence or possibility of such damages. SOME STATES DO NOT ALLOW THE LIMITATION OR EXCLUSION OF LIABILITY FOR INCIDENTAL OR CONSEQUENTIAL DAMAGES, SO THE ABOVE LIMITATION OR EXCLUSION MAY NOT APPLY TO YOU. IN NO CASE SHALL SOFTWIN'S LIABILITY EXCEED THE PURCHASE PRICE PAID BY YOU FOR BITDEFENDER. The disclaimers and limitations set forth above will apply regardless of whether you accept to use, evaluate, or test BitDefender.

IMPORTANT NOTICE TO USERS. THIS SOFTWARE IS NOT FAULT-TOLERANT AND IS NOT DESIGNED OR INTENDED FOR USE IN ANY HAZARDOUS ENVIRONMENT REQUIRING FAIL-SAFE PERFORMANCE OR OPERATION. THIS SOFTWARE IS NOT FOR USE IN THE OPERATION OF AIRCRAFT NAVIGATION, NUCLEAR FACILITIES, OR COMMUNICATION SYSTEMS, WEAPONS SYSTEMS, DIRECT OR INDIRECT LIFE-SUPPORT SYSTEMS, AIR TRAFFIC CONTROL, OR ANY APPLICATION OR INSTALLATION WHERE FAILURE COULD RESULT IN DEATH, SEVERE PHYSICAL INJURY OR PROPERTY DAMAGE.

GENERAL. This Agreement will be governed by the laws of Romania and by international copyright regulations and treaties. The exclusive jurisdiction and venue to adjudicate any dispute arising out of these License Terms shall be of the courts of Romania.

Prices, costs and fees for use of BitDefender are subject to change without prior notice to you.

In the event of invalidity of any provision of this Agreement, the invalidity shall not affect the validity of the remaining portions of this Agreement.

BitDefender and BitDefender logos are trademarks of SOFTWIN. All other trademarks used in the product or in associated materials are the property of their respective owners.

The license will terminate immediately without notice if you are in breach of any of its terms and conditions. You shall not be entitled to a refund from SOFTWIN or any resellers of BitDefender as a result of termination. The terms and conditions concerning confidentiality and restrictions on use shall remain in force even after any termination.

SOFTWIN may revise these Terms at any time and the revised terms shall automatically apply to the corresponding versions of the Software distributed with the revised terms. If any part of these Terms is found void and unenforceable, it will not affect the validity of rest of the Terms, which shall remain valid and enforceable.

In case of controversy or inconsistency between translations of these Terms to other languages, the English version issued by SOFTWIN shall prevail.

Contact SOFTWIN, at 5, Fabrica de Glucoza street, 72322-Sector 2, Bucharest, Romania, or at Tel No: 40-21-2330780 or Fax:40-21-2330763, e-mail address: <office@bitdefender.com>.



Preface

This guide is intended to all users who have chosen **BitDefender Mobile Antivirus** as a security solution for their mobile devices. The information presented in this book is accessible to everyone who has a basic knowledge of the mobile device owned and of its operating system.

This book will describe for you **BitDefender Mobile Antivirus**, the Company and the team who built it, will guide you through the installation process, will teach you how to configure it. You will find out how to use **BitDefender Mobile Antivirus**, how to update, test and customize it. You will learn how to get the best from BitDefender.

We wish you a pleasant and useful lecture.

1. Conventions Used in This Book

1.1. Typographical Conventions

Several text styles are used in the book for an improved readability. Their aspect and meaning are presented in the table below.

Appearance	Description
sample syntax	Syntax samples are printed with monospaced characters.
http://www.bitdefender.com	The URL link is pointing to some external location, on http or ftp servers.
< support@bitdefender.com >	E-mail messages are inserted in the text for contact information.
"Preface" (p. xi)	This is an internal link, towards some location inside the document.
filename	File and directories are printed using monospaced font.
option	All the product options are printed using strong characters.
<i>error messages</i>	Error messages are printed in <i>italics</i> .

1.2. Admonitions

The admonitions are in-text notes, graphically marked, bringing to your attention additional information related to the current paragraph.



Note

This note is just a short observation. Although you can omit it, the notes can provide valuable information, such as specific feature or a link to some related topic.



Important

This requires your attention and is not recommended to skip over it. Usually, it provides non-critical but significant information.



Warning

This is critical information you should treat with increased caution. Nothing bad will happen if you follow the indications. You should read and understand it, because it describes something extremely risky.

2. The Book Structure

The book consists of 5 parts, containing the major topics: Product Installation, About BitDefender, Description and Features, Configuration and Use, and Getting Help. Moreover, a glossary is provided to clarify some technical terms.

Product Installation. Step by step instructions for installing BitDefender on a mobile device. This is a comprehensive tutorial on installing **BitDefender Mobile Antivirus**. Starting with the prerequisites for a successful installation, you are guided through the whole installation process. Finally, the removing procedure is described in case you need to uninstall BitDefender.

About BitDefender. A short introduction to BitDefender. It explains who BitDefender and SOFTWIN are.

Description and Features. **BitDefender Mobile Antivirus**, its components and features are presented to you.

Configuration and Use. Description of basic administration and maintenance of BitDefender. The chapters explain in detail all options of **BitDefender Mobile Antivirus**, how to scan your mobile device and how to perform the updates.

Getting Help. Where to look and where to ask for help if something unexpected appears. It also includes a list of error messages and a FAQ section.

Glossary. The Glossary tries to explain some technical and uncommon terms you will find in the pages of this document.



3. Request for Comments

We invite you to help us improve the book. We have tested and verified all of the information to the best of our ability. Please write to tell us about any flaws you find in this book or how you think it could be improved, to help us provide you with the best documentation possible.

Let us know by sending an e-mail to <documentation@bitdefender.com>.



Important

Please write all of your documentation-related e-mails in English so that we can process them efficiently.



About BitDefender



1. Overview

BitDefender™ provides security solutions to satisfy the protection requirements of today's computing environment, delivering effective threat management to over 41 million home and corporate users in more than 200 countries.

- Features antivirus, firewall, antispymware, antispam and parental control for corporate and home users;
- The BitDefender range of products is intended to be implemented on complex IT structures (work stations, file servers, mail servers, and gateway), on Windows, Linux and FreeBSD platforms;
- Worldwide distribution, products available in 18 languages;
- Easy to use, with an installation wizard that guides users through the installation process and only asks a few questions;
- Internationally certified products: Virus Bulletin, ICSA Labs, Checkmark, IST Prize, etc;
- Round the clock customer care – the customer care team is available 24 hours, 7 days a week;
- Lightning fast response time to new computer attacks;
- Best detection rate;
- Hourly Internet updates of virus signatures - automatic or scheduled actions offering protection against the newest viruses.

1.1. Why BitDefender?

Proven. Most reactive antivirus producer. BitDefender fast reactivity in case of computer virus epidemic was confirmed beginning with the last outbreaks of CodeRed, Nimda and Sircam, as well as Badtrans.B or other dangerous, fast-spreading malicious codes. BitDefender was the first to provide antidotes against these codes and to make them freely available on the Internet for all affected people. Now, with the continuous expansion of the Klez virus - in various versions immediate antivirus protection has become once more a critical need for any computer system.

Innovative. Awarded for innovation by the European Commission and EuroCase. BitDefender has been proclaimed a winner of the European IST-Prize, awarded by the European Commission and by representatives of 18 academies in Europe.

Now in its eighth year, the European IST Prize is a reward for groundbreaking products that represent the best of European innovation in information technology.

Comprehensive. Covers every single point of your network, providing complete security. BitDefender security solutions for the corporate environment satisfy the protection requirements of today's business environment, enabling management of all complex threats that endanger a network, from a small local area to large multi-server, multi-platform WAN's.

Your Ultimate Protection. The final frontier for any possible threat to your computer system. As virus detection based on code analysis has not always offered good results, BitDefender has implemented behavior based protection, providing security against newborn malware.

These are **the costs** that organizations want to avoid and what the security products are designed to prevent:

- Worm attacks
- Communication loss because of infected e-mails
- E-mail breakdown
- Cleaning and recovering systems
- Lost productivity experienced by end users because systems are not available
- Hacking and unauthorized access that causes damage

Some simultaneously **developments and benefits** can be accomplished by using the BitDefender security suite:

- Increase network availability by stopping the spread of malicious code attacks (i.e., Nimda, Trojan horses, DDoS).
- Protect remote users from attacks.
- Reduce administrative costs and deploys rapidly with BitDefender Enterprise management capabilities.
- Stop the spreading of malware through e-mail, using a BitDefender e-mail protection at the company's gateway. Temporarily or permanently block unauthorized, vulnerable, and expensive application connections.

1.2. About SOFTWIN

Founded in 1990, winner of the IST Prize in 2002, SOFTWIN is now considered to be the technological leader of the East-European software industry with annual growth rates of more than 50% in the past five years and 70% of annual turnover from exports.

With a team of over 800 qualified professionals, and more than 10000 projects managed so far, SOFTWIN focuses on providing complex software solutions and



services which enable fast growing companies to solve critical business challenges and to take advantage of new business opportunities. The SOFTWIN development process is ISO 9001 certified.

As it is active on the most advanced IT markets of the US and European Union, SOFTWIN develops on 4 interlinked **business lines**:

- eContent Solutions
- BitDefender
- Business Information Solutions
- Customer Relationship Management

SOFTWIN has branch offices in **Germany, Spain, UK and United States**.



Product Installation



2. BitDefender Mobile Antivirus - Update Module Installation

The **BitDefender Mobile Antivirus - Update Module Installation** section of this user guide contains the following topics:

- [System Requirements](#)
- [Installation Steps](#)
- [Repair or Uninstall BitDefender Mobile Antivirus - Update Module](#)

2.1. System Requirements

To ensure proper functioning of the product, before installation, verify that the following system requirements are met:

- **Minimum Processor** - Pentium MMX 200 MHz
- **Minimum hard disk space** - 40MB
- **Minimum RAM Memory** - 64MB (128MB Recommended)
- **Operating system** - Windows 98/NT-SP6/ME/2000/XP; Internet Explorer 5.0 (+)
- **Software** - support for .NET Framework version 1.1; Nokia PC Suite

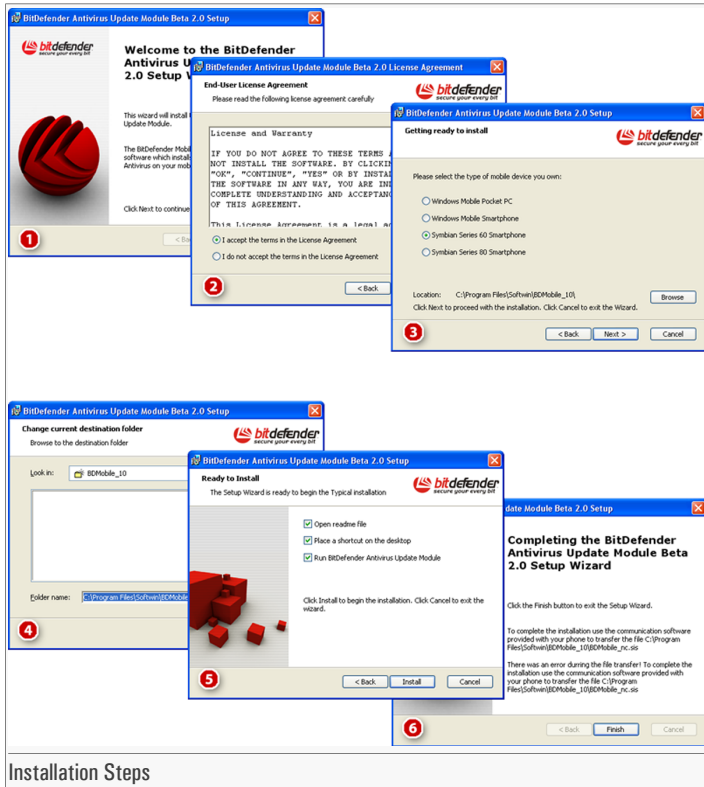


Warning

In order to install **BitDefender Mobile Antivirus** on your device and to update it, you will need an active connection between the device and the PC. Make sure you have an infrared or bluetooth device installed on your PC and that your mobile device supports the respective connection. You may use a data cable as well.

2.2. Installation Steps

Locate the setup file and double-click it. This will launch a wizard, which will guide you through the setup process:



Installation Steps

1. Click **Next** to continue or click **Cancel** if you want to quit installation.
2. Please read the License Agreement, select **I accept the terms in the License Agreement** and click **Next**. If you do not agree with these terms, click **Cancel**. The installation process will be abandoned and you will exit the setup process.
3. Select the operating system your mobile device works on. These are the available options:
 - **Windows Mobile Pocket PC**
 - **Windows Mobile Smartphone**
 - **Symbian Series 60 Smartphone**
 - **Symbian Series 80 Smartphone**



Choose **Symbian Series 60 Smartphone** in order to install **BitDefender Mobile Antivirus** on your mobile device.

You can select the folder where you want to install the product. The default folder is C:\Program Files\Softwin\BDMobile_10.



Important

To install **BitDefender Mobile Antivirus** on your device, you will have to transfer a file from this folder to the device. For more information, check the "*BitDefender Mobile Antivirus Installation*" (p. 27) section.

If you want to select another folder, click **Browse**. Otherwise, click **Next** to continue. You will skip step 4.

4. If you have chosen **Browse**, a new window will appear containing a file browser. Select the folder you wish BitDefender Mobile Antivirus - Update Module to be installed in. Click **OK** to change the path or **Cancel** to return to the previous window, without making any modifications.

You will return to step 3. Click **Next** to continue.

5. You have three options selected by default:
 - **Open readme file** - to open the readme file at the end of the installation.
 - **Place a shortcut on the desktop** - to place a shortcut to BitDefender Mobile Antivirus - Update Module on your desktop at the end of the installation.
 - **Run BitDefender Antivirus Desktop Module** - to run BitDefender Mobile Antivirus - Update Module.

Click **Install** in order to begin the product installation.

6. Click **Finish** to complete the product installation. If you have accepted the default settings for the installation path, a new folder named **Softwin** will be created in the **Program Files**, with a **BDMobile_10** subfolder.

2.3. Repair or Uninstall BitDefender Mobile Antivirus - Update Module

If you want to repair or remove **BitDefender Mobile Antivirus - Update Module**, access the Windows start menu and follow this path: **Start** → **Programs** → **BitDefender** → **Repair or Uninstall**.

You will be requested to confirm your choice by clicking **Next**. A new window will appear and you will be able to select one of the following options:

- **Repair** - to re-install BitDefender Mobile Antivirus - Update Module

- **Remove** - to remove all installed components.

To continue the setup process, select one of the options listed above. We recommend that you choose **Remove** for a clean re-installation.



3. BitDefender Mobile Antivirus Installation

The **BitDefender Mobile Antivirus Installation** section of this user guide contains the following topics:

- [Device Requirements](#)
- [Installing BitDefender Mobile Antivirus](#)
- [Uninstalling BitDefender Mobile Antivirus](#)

3.1. Device Requirements

To ensure proper functioning of the product, before installation, verify that the following system requirements are met:

- **Minimum memory** - 100kb.
- **Operating system** - Symbian Os v7; Symbian Os v8.
- **Developer platform** - Series 60.



Warning

In order to install **BitDefender Mobile Antivirus** on your device, you need to connect the device to your computer. Please make sure you have an infrared or bluetooth device or a data cable installed on your PC and read their respective documentation.

3.2. Installing BitDefender Mobile Antivirus

1. Install **BitDefender Mobile Antivirus - Update Module** on your computer.



Note

For more details check the [“BitDefender Mobile Antivirus - Update Module Installation”](#) (p. 23) section.

2. Connect the device to the computer and transfer the **BDMobile.sis** file from the folder where you installed **BitDefender Mobile Antivirus - Update Module** to your device.



Important

You can transfer the **.sis** file using an infrared or bluetooth device or data cable. To learn how to transfer data from a PC to a mobile device using these accessories, please read their documentation.

3. You will receive a message. Select **Yes** to continue the installation process or **No** to exit the installer.
4. If you have confirmed the installation process, a menu containing the following options will appear:
 - **Install** - to install **BitDefender Mobile Antivirus** on your device.
 - **View certificate** - to view BitDefender's certificate.
 - **View details** - to view information about **BitDefender Mobile Antivirus**.
5. Choose **Install** and **OK** to continue.
6. Select where to install BitDefender.
 - **Ph. Mem.** - The program will be installed in the memory of the device. This is the recommended option.
 - **M. card** - You may install BitDefender on a memory card, if available.
7. Choose **OK**.
8. Please read the "End User License Agreement". If you agree with these terms, select **OK** to start the installation process. Else, choose **Cancel** to abort installation.
9. If the installation was completed successfully, a confirmation message will appear. You will then, be sure to benefit from the **BitDefender Mobile Antivirus** protection.

3.3. Uninstalling BitDefender Mobile Antivirus

If you want to uninstall **BitDefender Mobile Antivirus** you must follow these steps:

1. Enter the **Application manager** from the phone menu.
2. Browse through the file list in order to locate **BitDefender Mobile Antivirus**.
3. From the **Options** menu, select **Remove**.
4. You will be asked to confirm your choice. Select **Yes** to remove **BitDefender Mobile Antivirus** from your device.



Description and Features



4. BitDefender Mobile Antivirus

The introduction of mobile devices with operating systems created a new challenge for hackers. It was just a matter of time until the first piece of malware appeared, followed by other malicious applications. Although they are not very numerous, the risk of having a mobile device infected with malware exists. And this is only the beginning. In time, they will become more and more widely spread and that is why mobile devices must be protected against these applications by using a reliable antivirus.

BitDefender Mobile Antivirus comes to solve the basic protection needs of your mobile device. A series of key features make **BitDefender Mobile Antivirus** the best option for the protection of your mobile device:

- **Real-time protection.** It keeps your mobile device safe from malware by scanning all accessed files.
- **Virus scanning and removal.** The scan engine based on the award-winning BitDefender technologies scans for and removes viruses.
- **Easy updates.** BitDefender can be updated via PC, using the update application, or via GPRS.
- **Professional technical support.** It is offered online by qualified support representatives.

BitDefender Mobile Antivirus stands out from the rest of mobile antiviruses by its user-friendly interface and its key features. By installing **BitDefender Mobile Antivirus** on your mobile device you will protect it against malicious software and you will keep your data safe.



Configuration and Use



5. BitDefender Mobile Antivirus

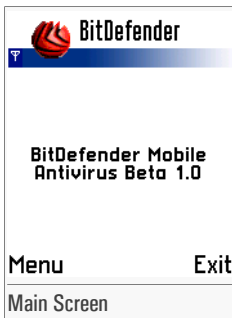
The **BitDefender Mobile Antivirus** section of this user guide contains the following topics:

- Overview
- Scan
- Report
- Virus Shield
- Device Update

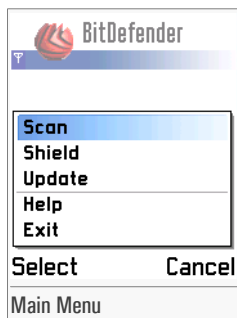
5.1. Overview

BitDefender Mobile Antivirus is the application installed on your mobile device so as to protect it against viruses and other malware.

Browse for BitDefender in the phone menu and start it. The following screen will appear:



If you select **Menu**, the main menu of the application will be displayed:



The following options are available:

- **Scan** - to access the **Scan** section.



Note

For a detailed description check the [Scan](#) section of this user guide.

- **Shield** - to access the **Shield** section.



Note

For a detailed description check the [Shield](#) section of this user guide.

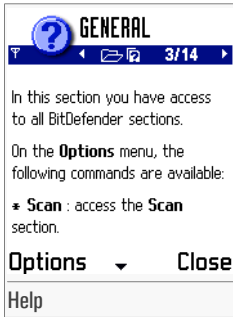
- **Update** - to access the **Update** section.



Note

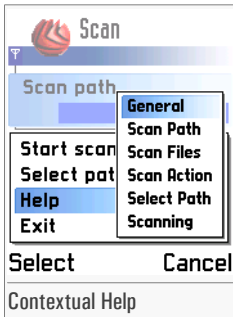
For a detailed description check the [Device update](#) section of this user guide.

- **Help** - to access the complete help file.



This is where you can find a description of BitDefender Mobile Antivirus and of its features. Browse to see the desired topic.

A contextual help is accessible in each section, on the **Options** menu for a better understanding of the topics related to the respective section.



- **Exit** - to exit the application.

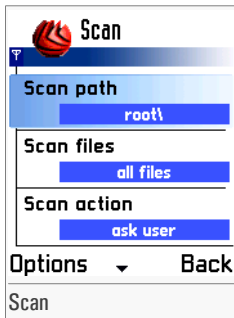


Note

You can also exit the application by selecting **Exit** from the right bottom side.

5.2. Scan

To access this section choose **Scan** from the main menu.



This is where you can configure the scan settings, scan your device and see the scan results.

5.2.1. Settings List

A **Settings list** containing the following options is available:

- **Scan path** - to specify the scan target. By selecting this option, an edit box will appear:



Provide the path to the files or folders you want to be scanned and select **OK**. If you want to return to the previous screen without making any changes, select **Cancel**.



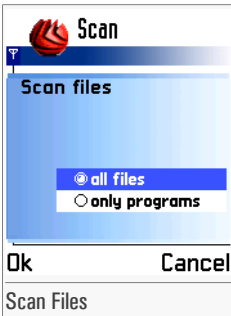
Warning

Every path you type must end in a **backslash** “\”. Otherwise, the error message *User scan path doesn't exist* will appear and the scan will be aborted.



Note
 1 The default path is root\. With this option, all your files will be scanned.

- **Scan files** - to specify the type of files to be scanned. By selecting this option, the following screen will appear:



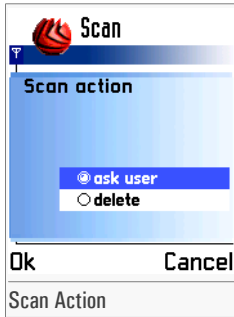
Two options are available:

Option	Description
All files	All files will be scanned for viruses and other malware.
Only programs	Only program files will be scanned for viruses and other malware.

Choose the desired one and select **OK**. If you want to return to the previous screen without making any changes, select **Cancel**.

Note
 1 By default, all files will be scanned.

- **Scan action** - to specify the action mode. By selecting this option, the following screen will appear:



Two options are available:

Option	Description
Ask user	When an infected file is found, BitDefender prompts the user for action. You must confirm your choice by selecting Yes/No .
Delete	Infected files will be automatically deleted.

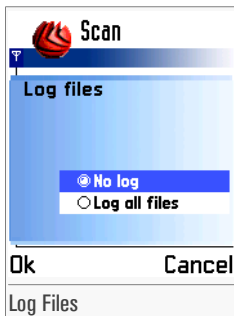
Choose the desired one and select **OK**. If you want to return to the previous screen without making any changes, select **Cancel**.



Note

By default, the user will be prompted for action.

- **Log files** - to specify the logging settings. By selecting this option, the following screen will appear:





Two options are available:

Option	Description
No log	The scan details will not be logged.
Log all files	All scan details will be logged in a file. The log is overwritten each time you scan your device. This helps us solve scanning issues if something unexpected happens during the scan. Should any problem appear during the scanning process, please send us the log file from its location at < support@bitdefender.com >.



Note

You cannot open the log file.

Choose the desired one and select **OK**. If you want to return to the previous screen without making any changes, select **Cancel**.

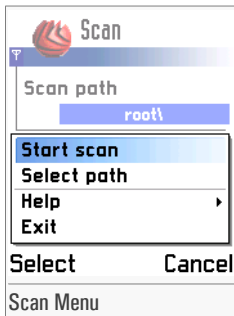


Note

By default, the scan details will not be logged.

5.2.2. Options menu

If you select **Options**, a contextual menu will appear:



On the **Options** menu, the following options are available:

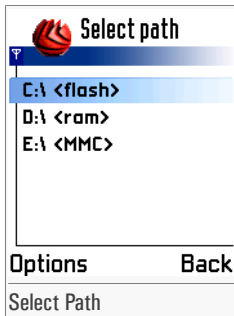
- **Start scan** - to initiate a scan process.

- **Select path** - to access the advanced update location settings.
- **Help** - to access the contextual help file.
- **Exit** - to exit the application.

Advanced Location Settings

The user of a mobile device may suspect a file to be infected, but it may not know exactly where such file is located. In this case, there are two solutions: scan either the entire memory of the device or the advanced location settings. The latter is definitely the better choice as it saves time and resources.

To access the advanced location settings, choose **Select path** from the **Options** menu. The following screen will appear:

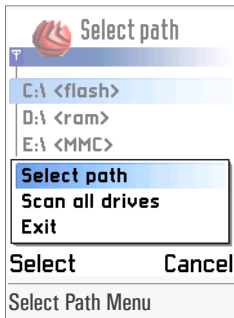


A list of all of the **memory** types available will be displayed: flash, ram and MMC. Using the navigation pad, you can browse through the list to find the desired scan target.



Important
Only folders are listed.

If you select **Options**, a contextual menu will be displayed:



You can choose:

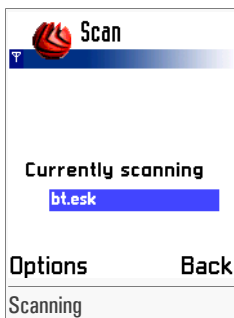
- **Select path** - to select the desired scan target.
- **Scan all drives** - to choose all the drives to be scanned.
- **Exit** - to exit the application.

If you have chosen **Select path** or **Scan all drives**, you will return to the [Settings list](#) and the new path will appear in the **Scan path** section.

Select **Back** to return to the previous screen without making any changes.

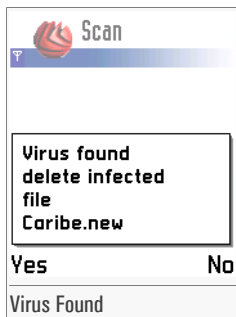
Start scan

In order to start a scan process, just select **Start scan** from the **Options** menu. The following screen will appear:



You can see the last file scanned. If an infected file is detected, depending on the scan action selected, it will be automatically deleted or you will be prompted for action.

If the **Ask user** option is enabled, the following message will be displayed every time an infected file is detected:

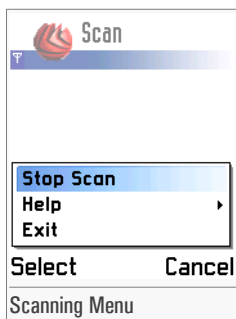


Choose **Yes** to delete the file or **No** to ignore the infection.

**Warning**

If you choose **No**, your system will not be protected.

If you select **Options** from the left bottom, a contextual menu will appear:



You can choose:

- **Stop scan** - to abort the scan process.
- **Help** - to access the contextual help file.
- **Exit** - to exit the application.

At the end of the scanning process, you will be directed to the **Report** section where you can view the scan results.

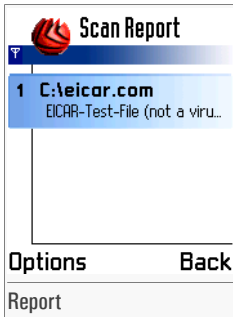


Note

For more details about the report files check the [Report](#) section.

5.3. Report

To access this section you must initiate a scan process. At the end of it, the **Report** section will appear:



In this section you can see the list of all infected files. Here you can find information on the path, virus name and the viral status of each file.

If you select **Options** from the left bottom, a contextual menu will appear:



You can choose:

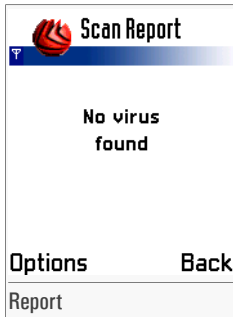
- **Info** - to view detailed information about the infected file. By selecting this option, the next message will appear:



You can see the path to the infected file and the name of the virus. Also, status information is available.

- **Help** - to access the contextual help file.
- **Exit** - to exit the application.

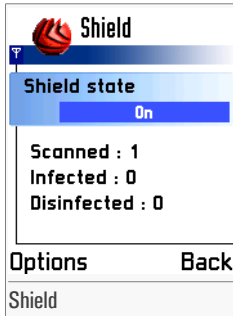
If no virus was detected, the following screen will appear:



Select **Back** to return to the **Scan** section.

5.4. Shield

To access this section, choose **Shield** from the main menu.

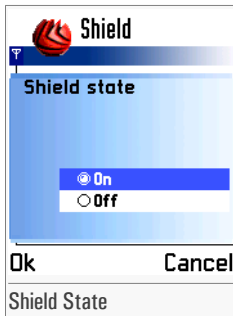


In this section you can enable/disable real-time protection and view the shield statistics. For each file you can see the path, the name of the virus and its viral status.

5.4.1. Settings List

A **Settings list** containing the following option is available:

- **Shield state** - to enable/disable real-time protection. By selecting this option, the following screen will appear:



Two options are available:

Option	Description
On	Turns on real-time protection.
Off	Turns off real-time protection.



Important

By default, the shield is turned off. The first time you turn on the shield you will have to restart your device.

If you select **Options**, a contextual menu will appear:



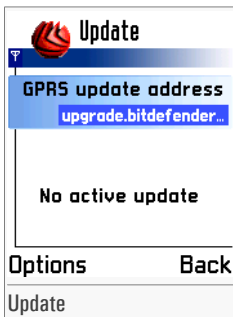
You can choose:

- **Help** - to access the contextual help file.
- **Exit** - to exit the application.

Select **Back** to return to the **Scan** section.

5.5. Device Update

To access this section choose **Update** from the main menu.



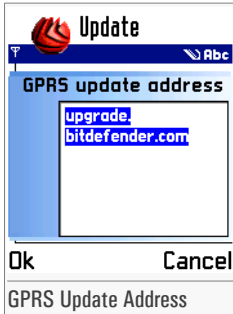
This is where you can initiate the update via GPRS and view update status information.



5.5.1. Settings List

A **Settings list** containing the following option is available:

- **GPRS update address** - to change the url address of the update server. By selecting this option, an edit box will appear:



Provide the new update server location and select **OK**. If you want to return to the previous screen without making any changes, select **Cancel**.



Note

Do not start the url address with "http://"; provide solely the server name. Otherwise, the error message *Update failed invalid url or no connection available* will appear and BitDefender will fail update.



Note

The default location is `upgrade.bitdefender.com`.

5.5.2. Options Menu

If you select **Options**, a contextual menu will appear:




On the **Options** menu, the following options are available:

- **Update via GPRS** - to update BitDefender via GPRS.
- **Last update** - to see the date and time of the last successful update.
- **Help** - to access the contextual help file.
- **Exit** - to exit the application.


Update via GPRS

You can update your BitDefender anytime you want by using GPRS.

First of all, make sure the GPRS service is activated and the appropriate settings are installed on your device. If not, contact your mobile phone operator in order to activate GPRS and to receive the GPRS settings.

 **Note** If the GPRS service is not available, an error message will be displayed.

You can change the update location by selecting **GPRS update address** from the **Settings list**. Type in the new GPRS update location.

 **Note** The default location is `upgrade.bitdefender.com`.

Select **Update via GPRS** from the **Options** menu. A contextual menu will appear. To proceed with the update process you must choose the access point given by the operator. The update files will be downloaded to your device and the update process will be initiated. If the update was successful, a message will appear. Select **OK** and restart the application.



Update via PC

You can update your BitDefender using the desktop module.

First of all, you must [download the update file on your computer](#).



Warning

A connection (cable, bluetooth, infrared) between the device and the PC is required in order to transfer the update file from your PC to the device.

After downloading the update file on your computer, Nokia PC Suite will search for an active connection and transfer the update file on your device.

BitDefender will be closed and the installer will start. Next, follow the steps in the *"Installing BitDefender Mobile Antivirus"* (p. 27) section.



6. BitDefender Mobile Antivirus - Update Module

The **BitDefender Mobile Antivirus - Update Module** section of this user guide contains the following topics:

- [Overview](#)
- [Update](#)
- [Settings](#)
- [Help](#)

6.1. Overview

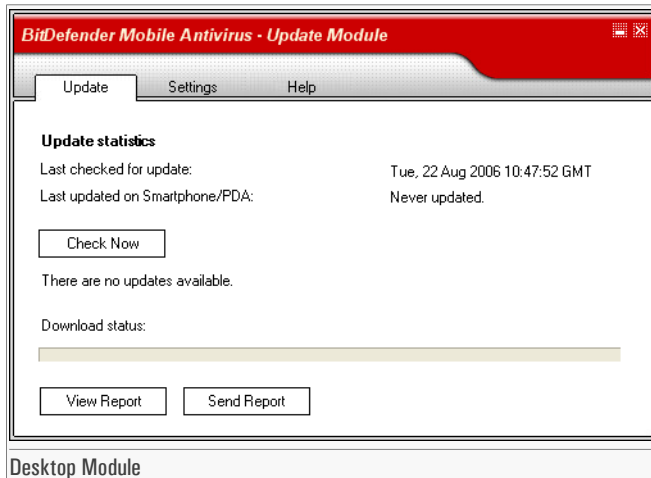
BitDefender Mobile Antivirus - Update Module represents the desktop component of **BitDefender Mobile Antivirus**. Its function is to search for updates and transfer them to the device. It also provides complete user support.



Warning

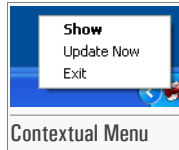
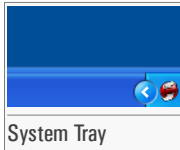
You must install **BitDefender Mobile Antivirus - Update Module** on a computer in order to install **BitDefender Mobile Antivirus** on your mobile device.

To access the console, follow the path: **Start** → **Programs** → **BitDefender** → **BitDefender Mobile Antivirus** or quicker, double click the **BitDefender** icon from the system tray.



You can access each section of this application by simply clicking the corresponding tab.

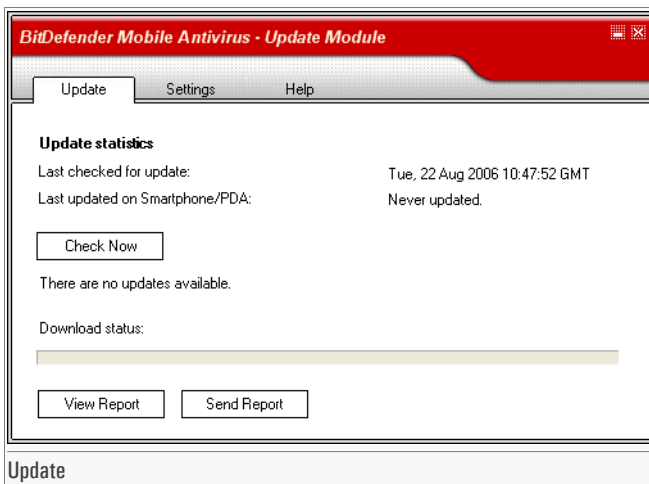
When the console is minimized, an icon will appear in the system tray:



If you double-click this icon, the console will open. Also, by right-clicking it, a contextual menu containing the following options, will appear:

- **Show** - opens the console.
- **Update now** - performs an **immediate update**.
- **Exit** - shuts down the application. By selecting this option, the icon in the system tray will disappear and in order to access the console, you will have to launch it again from the Windows Start menu.

6.2. Update



In this section you can check for updates and see update statistics. This is where you can find out the date and time of the last check and last successful update.



In order to update **BitDefender Mobile Antivirus**, you must download the updates on your computer and transfer them to your device.

You can check for updates anytime you want by clicking **Check Now**. The **Update** module will connect to the BitDefender update server and it will check for any available updates. Also, you can set BitDefender to automatically check for updates. If you are connected to the Internet through broadband or DSL and you have selected **Automatically update every x hours**, BitDefender will check for updates when you turn on your computer and then every **3 hours**.

If an update was detected, it will be downloaded to your computer. Then, BitDefender will try to connect to your device. If a connection is available, the update file will be transferred to the device.



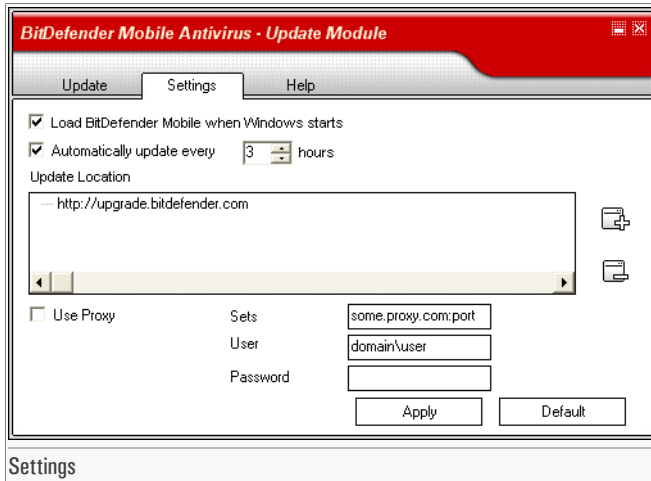
Important

BitDefender will automatically transfer the update file on your device using Nokia PC Suite. Check the *"Device Update"* (p. 48) section to learn how to complete the update process.

If the connection times out, the update file will not be transferred to your device.

Every time an update check is requested, no matter if it is manual or automatic, a report file is created. To see the report file, click **View report**. You can send the report file to BitDefender by clicking **Send report**.

6.3. Settings



In this section you can configure the desktop application settings.

The window contains 3 categories of options (**General settings**, **Update settings** and **Update location settings**).

6.3.1. General Settings

- **Load BitDefender Mobile when Windows starts** - automatically launches BitDefender Mobile at startup.

6.3.2. Update Settings


- **Automatically update every x hours** - BitDefender automatically checks for available updates at the specified update locations. You can set how often BitDefender should check for updates. The default time interval is 3 hours.

6.3.3. Update Location Settings

You can check for updates from the local network, over the Internet, directly or through a proxy server. The following options are available:



- **Update location** - you can specify the location(s) where BitDefender should check for updates. The default location is: <http://upgrade.bitdefender.com>.

To add a new item to the list click the  **Add** button and type in the new location.

BitDefender will check for updates at each location in the list, by order of priority. If an update is detected, it will stop searching for updates at other locations.



Important

The locations are listed by order of priority, starting from the top, which means that the first rule is top priority. Right-click a rule and choose **Move up** or **Move down** in order to change its priority.

To delete an item from the list, select it and click the  **Remove** button.

- **Use Proxy** - in case the company uses a proxy server check this option. The following settings must be specified:
 - **Sets** - type in the IP or the name of the proxy server and the port BitDefender uses to connect to the proxy server.



Important

Syntax: name:port or ip:port.

- **User** - type in a user name recognized by the proxy.



Important

Syntax: domain\user.

- **Password** - type in the valid password for the previously specified user.

To enable/disable an option select/clear the checkbox corresponding to it.

Click **Apply** to save the changes or click **Default** to load the default settings.

6.4. Help



In this section you can get all the information you need in case something unexpected appears. This is where you can also find contact information.

6.4.1. Help Information

Three links are available in the upper part of the window:

- **Help Topics** - to access the help files. Here you can find all the information you need about BitDefender Mobile Antivirus and a short description of BitDefender and of SOFTWIN. It also contains a **Best Practices** section, where you can learn how to keep your device free from malware.
- **Online Knowledge Base** - to connect to the BitDefender Knowledge Base.



Important

An active Internet connection is required in order to access the **Online Knowledge Base**.



Note

For more information about the BitDefender Knowledge Base, please check the "*Support*" (p. 63) section.

- **Online FAQ** - to connect to an online FAQ database.



Important

An active Internet connection is required in order to access the **online FAQ database**.

6.4.2. Contact Information

Below, you can see the **Contact Information**. Using this information you can get online help from our support center or you can contact us.



Note

For more information please check the *"Support"* (p. 63) section.



Getting Help



7. Support

7.1. Support Department

As a valued provider, SOFTWIN strives to provide its customers with an unparalleled level of fast and accurate support. The Support Center listed below is continually being updated with the newest virus descriptions and answers to common questions, so that you obtain the necessary information in a timely manner.

At SOFTWIN, dedication to saving its customers time and money by providing the most advanced products at the fairest prices has always been a top priority. Moreover, we think that a successful business is based on a good communication and a commitment to excellence in customer support.

You are welcome to ask for support at <support@bitdefender.com> any time. For a prompt response, please include in your email as many details as you can about your BitDefender, about your system and describe the problem as accurate as possible.

7.2. On-line Help

7.2.1. BitDefender Knowledge Base

The BitDefender Knowledge Base is an online repository of information about BitDefender products. It stores, in an easily accessible format, reports on the results of the ongoing technical support and bugfixing activities of the BitDefender support and development teams, along with more general articles about virus prevention, the management of BitDefender solutions and detailed explanations, and many other articles.

The BitDefender Knowledge Base is open to the public and freely searchable. This wealth of information is yet another way to provide BitDefender customers with the technical knowledge and insight they need. All valid requests for information or bug reports coming from BitDefender clients eventually find their way into the BitDefender Knowledge Base, as bugfix reports, workaround cheatsheets or informational articles to supplement product helpfiles.

The BitDefender Knowledge Base is available any time at <http://kb.bitdefender.com>.

7.3. Contact information

Efficient communication is the key to a successful business. For the past 10 years SOFTWIN has established an indisputable reputation in exceeding the expectations of clients and partners, by constantly striving for better communications. Please do not hesitate to contact us regarding any issues or questions you might have.

7.3.1. Web addresses

Sales department: <sales@bitdefender.com>
Technical support: <support@bitdefender.com>
Documentation: <documentation@bitdefender.com>
Partner Program: <partners@bitdefender.com>
Marketing: <marketing@bitdefender.com>
Media Relations: <pr@bitdefender.com>
Job Opportunities: <jobs@bitdefender.com>
Virus Submissions: <virus_submission@bitdefender.com>
Spam Submissions: <spam_submission@bitdefender.com>
Report Abuse: <abuse@bitdefender.com>
Product web site: <http://www.bitdefender.com>
Product ftp archives: <ftp://ftp.bitdefender.com/pub>
Local distributors: http://www.bitdefender.com/partner_list
BitDefender Knowledge Base: <http://kb.bitdefender.com>

7.3.2. Address

The BitDefender offices are ready to respond to any inquiries regarding their areas of operations, in both commercial and general matters. Their respective addresses and contacts are listed below.

Germany

Softwin GmbH
Karlsdorfer Straße 56 88069
Tettngang
Technischer Support: <support@bitdefender.de>
Vertrieb: <vertrieb@bitdefender.de>
Phone: 07542/94 44 44
Fax: 07542/94 44 99
Product web site: <http://www.bitdefender.de>



Spain

Constelación Negocial, S.L

C/ Balmes 195, 2ª planta, 08006

Barcelona

Soporte técnico: <soporte@bitdefender-es.com>

Ventas: <comercial@bitdefender-es.com>

Phone: +34 932189615

Fax: +34 932179128

Sitio web del producto: <http://www.bitdefender-es.com>

U.S.A

BitDefender LLC

6301 NW 5th Way, Suite 3500

Fort Lauderdale, Florida 33308

Technical support: <support@bitdefender.us>

Sales: <sales@bitdefender.us>

Phone: 954 776 62 62, 800 388 80 62

Fax: 954 776 64 62, 800 388 80 64

Product web site: <http://www.bitdefender.us>

Romania

SOFTWIN

5th Fabrica de Glucoza St.

PO BOX 52-93

Bucharest

Technical support: <suport@bitdefender.ro>

Sales: <sales@bitdefender.ro>

Phone: +40 21 2330780

Fax: +40 21 2330763

Product web site: <http://www.bitdefender.ro>



Glossary

Access point

An access point is a stand alone device used to connect wireless communication devices in its range to a fixed wire network. Using this base station, a mobile device owner can connect to other mobile device or computer, to the Internet or to a server.

It also refers to the radio device attached to the mobile device that receives the signal from the base station.

Backdoor

A hole in the security of a system deliberately left in place by designers or maintainers. The motivation for such holes is not always sinister; some operating systems, for example, come out of the box with privileged accounts intended for use by field service technicians or the vendor's maintenance programmers.

Bluetooth

It represents a short-range radio technology which enables a low cost, low power wireless connection. A device that supports bluetooth can connect to one or more bluetooth supporting devices only if they are in range and the connection is accepted by each part. The most common range of action for a such device is 10 metres.

Two devices using bluetooth connection can easily transfer data. Although manufacturers and developers have taken many security measures to protect the system and the data, it doesn't mean that there is no security risk. However, without specialised equipment, a potential attack can be launched only if the hacker's device is in range.

Browser

Generally, a software application used to locate and display files or folders. It is most commonly used when referring to Internet. A web browser is used to locate and display Web pages.

Disk drive

It's a machine that reads data from and writes data onto a disk.

Download

To copy data (usually an entire file) from a main source to a peripheral device. The term is often used to describe the process of copying a file from an online service to one's own computer or mobile device. Downloading can also refer to copying a file from a network file server to a computer on the network.

E-mail

Electronic mail. A service that sends messages on computers via local or global networks.

Error messages

Whenever BitDefender encounters an error or doesn't function properly, an error message will be displayed. It contains information about what had gone wrong.

Events

An action or occurrence detected by a program. Events can be user actions, such as clicking a mouse button or pressing a key, or system occurrences, such as running out of memory.

Filename extension

The portion of a filename, following the final point, which indicates the kind of data stored in the file.

Many operating systems use filename extensions, e.g. Unix, VMS, and MS-DOS. They are usually from one to three letters (some sad old OSES support no more than three). Examples include "c" for C source code, "ps" for PostScript, "txt" for arbitrary text.

GPRS

General Packet Radio Service (GPRS) is a mobile data service that enables sending and receiving data at a moderate speed. It is commonly used for sending and receiving emails and MMS messages, web browsing, downloading games, ringtones or logos etc.

Infrared

Infrared radiation is an electromagnetic radiation that has wavelengths situated between 750nm and 1mm. One of its main use is enabling short-range communication between computers, computer peripherals and mobile devices.

Data can be easily exchanged using infrared devices. Unlike bluetooth technology, the infrared connection permits a secure data transfer.

I/O errors

An I/O error is counted everytime the scanning engine is denied access to a file. The files for which an I/O error is returned include the operating system files, the files in use, and the user-protected files.

Operating system files. The files are in use by the Windows operating system and the scanning engine is permanently denied access to them. For example, the paging file used for storing the system virtual memory is inaccessible to the antivirus.

Files in use. The files are in use by other software and the scanning engine is temporarily denied access to them. For example, using an editing software



during a scan will deny the access to the files opened in the editing software. Closing the editing software before starting the scan will allow the scanning engine to access these files.

User-protected files. The user initiating the scan is denied the access to the files. For example, although a user is allowed to scan the files contained in her home folder on a file server, she will not be able to scan the files from the other users' home folders stored on the same file server.

To reduce the number of I/O errors, close all other software before initiating the scan.

Malware

Short for malicious software. The term refers to any application designed to damage a system.

This kind of software comprises a various range of different applications, such as viruses, trojans and worms.

Memory

Internal storage areas in the computer or the mobile device. The term memory identifies data storage that comes in the form of chips, while the word storage is used for memory that exists on tapes or disks.

A mobile device has three types of memory: RAM, ROM and flash. RAM represents the read and write memory, while ROM is the read-only memory. The data stored in RAM can be modified and, when the power is turned off, it is lost. In ROM, the data cannot be modified or erased. Flash memory is a memory chip where a program can be stored. It can be erased and reprogramed in blocks, but only in special conditions.

To extend the memory of a device, a MMC can be used. MMC, or Multi Media Card, is a flash memory card. Its size can reach up to 2 Gb.

MMS

Multimedia Message Service(SMS) is a service that permits the sending of multimedia content from a mobile device to another using WAP technology. Images, audio or video clips can be sent via MMS.

A mobile device can be infected using this service, by receiving an infected file.

Mobile device

Currently, it is used when referring to intelligent mobile communication devices, such as smartphones and handheld devices. Running on operating systems, combining phone and computer features and small size are their main characteristics.

Path

The exact directions to a file on a device that works on an operating system. These directions are usually described by means of the hierarchical filing system from the top down.

The route between any two points, such as the communications channel between two computers.

Port

An interface on a computer to which you can connect a device. Personal computers have various types of ports. Internally, there are several ports for connecting disk drives, display screens, and keyboards. Externally, personal computers have ports for connecting modems, printers, mice, bluetooth device, infrared device and other peripheral devices.

In TCP/IP and UDP networks, an endpoint to a logical connection. The port number identifies what type of port it is. For example, port 80 is used for HTTP traffic.

Report file

A file that lists actions that have occurred. BitDefender maintains a report file that contains the scan results.

Root

Represents the top level of a hierarchy.

When talking about the disk drive root, it refers to all files or folders.

SMS

Short Message Service(SMS) is a service available on most mobile phones. It enables two mobile phones owners to communicate through short text messages.

Startup items

Any files placed in this folder will open when the computer starts. For example, a startup screen, a sound file to be played when the computer first starts, a reminder calendar, or application programs can be startup items. Normally, an alias of a file is placed in this folder rather than the file itself.

System tray

Introduced with Windows 95, the system tray is located in the Windows taskbar (usually at the bottom next to the clock) and contains miniature icons for easy access to system functions such as fax, printer, modem, volume, and more. Double click or right click an icon to view and access the details and controls.

Trojan

A destructive program that masquerades as a benign application. Unlike viruses, Trojan horses do not replicate themselves but they can be just as



destructive. However, they may contain a package with several malicious applications, like viruses or worms, that can spread by themselves and affect other mobile devices or even computers. One of the most insidious types of Trojan horse is a program that claims to rid your device of viruses but instead introduces viruses onto your device.

The term comes from a story in Homer's Iliad, in which the Greeks give a giant wooden horse to their foes, the Trojans, ostensibly as a peace offering. But after the Trojans drag the horse inside their city walls, Greek soldiers sneak out of the horse's hollow belly and open the city gates, allowing their compatriots to pour in and capture Troy.

Update

A new version of a software or hardware product designed to replace an older version of the same product. In addition, the installation routines for updates often check to make sure that an older version is already installed on your device; if not, you cannot install the update.

BitDefender has its own update module that allows you to manually check for updates, or let it automatically update the product.

Virus

A program or piece of code that is loaded onto your device without your knowledge and runs against your will. Most viruses can also replicate themselves. A simple virus that can copy itself over and over again is relatively easy to produce. Even such a simple virus is dangerous because it will quickly use all available memory and bring the system to a halt. An even more dangerous type of virus is one capable of transmitting itself across networks and bypassing security systems.

Virus definition

The binary pattern of a virus, used by the antivirus program to detect and eliminate the virus.

WAP

Wireless Application Protocol (WAP) is a system similar to a Web browser designed for applications that run on mobile devices. Internet access from a mobile device is possible thanks to WAP technology.

Worm

A malicious program that propagates itself over a network, reproducing itself as it goes. Mobile worms can spread from a mobile device to another via bluetooth or memory cards. Also, it can infect computers. It cannot attach itself to other programs.

